

African Renaissance: A continent on the rise!

For the third time in the past nine years, both African Landscape Architecture Profession and Education, was recently showcased in Philadelphia, at the Annual meeting of the ASLA (American Society of Landscape Architects). Hitesh Mehta, FASLA FAAK - IFLA Africa founding member and now a member of the 'Advisory Committee', had organized a Panel Presentation titled "African Renaissance: A continent on the rise!". Other members of the panel included *Anthony Wain*, MILASA (from Cape Town), one of the most distinguished Landscape Architect's practicing in Africa and *Carolynne Wanza*, Education and Academic Affairs committee member of IFLA Africa Exco. She traveled from Nairobi and was The FIRST black female African Landscape Architect ever to present at the Annual Meeting and when introduced, received an ovation that lasted 10-15 seconds! The ASLA Annual Meeting is by far, the largest gathering of Landscape Architects (average of 6,000 every year) anywhere in the world and one of the most difficult conferences anywhere to get an acceptance to present. In spite of the Monday, just-after-lunch slot, Africa LA presentation was well attended and we concluded with a great Question and Answer session.



From Right to left: Landscape Architects Hitesh Mehta, Carolynne Wanza and Anthony Wain



Attendees following proceedings of the presentation



IFLA-AFRICA
INTERNATIONAL FEDERATION
OF LANDSCAPE ARCHITECTS

NEWS

October, 2018

This Month IFLA-Africa News comes from



Hitesh Mehta

IFLA Africa founding member
& Advisory Committee

email: hm@h-m-design.com T: 954.999.0431
SKYPE: nairobi2




Carolynne Wanza

Education and Academic Affairs
(EAA)

email: nthiwanza@yahoo.com

Next Issue from New IFLA-Africa Members

 <https://web.facebook.com/IFLA.Africa/>

The interactive session highlighted rural and urban ecological and social network and presented opportunities in landscape architecture education institutions in Africa. An overview of a selected number of projects across the continent was looked into while highlighting special design and implementation considerations like culture and environment. What came out strongly is the wealth of the profession's practice diversity that the African continent/people possess; an attribute to be proud off!

The number of landscape architecture institutions offering bachelor's degrees and related courses has tremendously grown from one in 1971 (University of Pretoria) to 10 in 2017. We are hopeful that this will gain better momentum in the near future.

Lessons learned

The presentation focused on IFLA's main agenda which is to advance the profession of landscape architecture and uphold high standards of professional service to its members. Guided by this, the following was discussed as a way forward:

- i. Establish more training institutions especially undergraduate level;
- ii. Encourage and support African institutions to expand their curricula to include needs for the local communities;
- iii. Educate the public about the profession of landscape architecture;
- iv. Seek support from the government and allied institutions so that landscape architecture practice is ingrained in law;
- v. Establish outreach programs by landscape architecture students and professionals that will have direct social, economic and environmental impact on the community;
- vi. Work with other institutions to improve the livelihoods of communities living in both rural and urban areas;
- vii. Lobby for more collaboration between the profession and allied professions.

It was unanimously agreed that Landscape Architects need to be more vocal and present so that the public is aware of what we can offer to improve our livelihoods; the more the voices the faster the profession grows. We look forward to a collaborative exciting venture with the rest of the world!

Sights of Philadelphia, United States of America

"My first trip to the America's was one to never forget! The longest journey of my life! Great scenes, people and food" Carolyne Wanza



Philadelphia city hall at the heart of the city

African Delegation at the annual meeting of the ASLA (American Society of Landscape Architects)



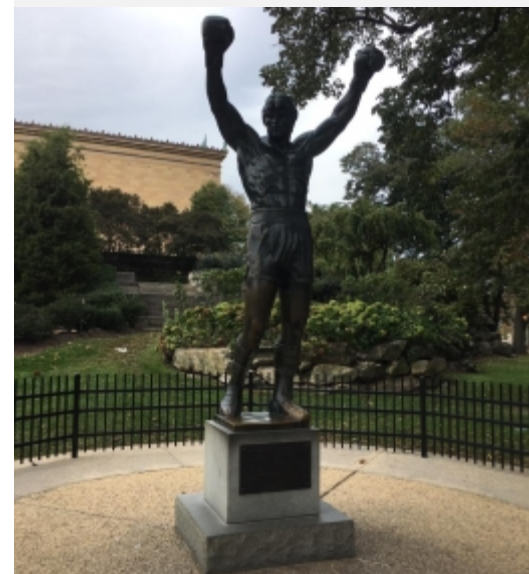
From Right to left: Landscape Architects Carolyne Wanza, Hitesh Mehta, and Anthony Wain



Anthony Wain and Carolyne Wanza at the ASLA meeting.



Philadelphia city from the iconic stairs from the movie "Rocky"



The famous Rocky sculpture, Philadelphia city



ExCo's NEWS FROM Kharbal James Kaltho, IFLA-Africa Chair, Communication and External Relations (CER)

Communications in IFLA-Africa

The IFLA Africa communications and external relations committee (IFLA-Africa CER) has grown over the past years through the dynamic team work and commitment of committee members made up of representatives from the five member national associations of IFLA Africa.



Mobile Tel.: +234-7039755565
Email: kjkaltho@gmail.com
Skype: kharbal.kaltho

Stories from Africa

The IFLA Africa newsletter was initiated and developed as part of a strategy to improve communication among member countries and doubles as a means of obtaining periodic updates on the state of landscape architecture education and practice in Africa. The maiden edition was published in March, 2018. Each subsequent edition has featured news updates, current trends in landscape architecture education and practice on the African continent, and useful online learning links and resources. Each issue features content from a National president, along with a piece by an IFLA Africa EXco member as well as other news feeds. Behind the success of each edition is the valued contribution of a dedicated team who also provide content. The team comprises:

- i. Carey Duncan and Graham Young IFLA Africa President and Secretary General respectively and
- ii. Editor and layout design: Kharbal Kaltho, chair IFLA-Africa CER.

So far all five IFLA Africa member national associations, Morocco, South Africa, Tunisia, Nigeria and Kenya have been featured in the newsletters. With the hopes of Malawi, Niger, Uganda and Ethiopia joining soon, we are confident there will be more interesting stories coming from Landscape Architects in the wonderful continent of Africa.

Passing on the baton: IFLA Central leadership



James Hayter,
Current IFLA President

At the heal of the IFLA world congress in Singapore, IFLA welcomes a New President James Hayter who picked up from the remarkable work of Kathrin Moore the immediate past IFLA president.



Professor Kathryn Moore,
Immediate Past IFLA President

World Events : <http://iflaonline.org/events/>

IFLA-AFRICA
Communications and External Relations
Committee Members



Carolynne Wanza - Kenya
nthiwanza@yahoo.com



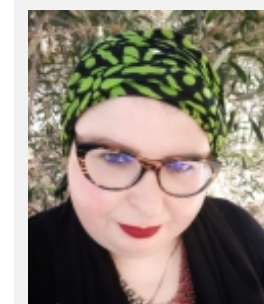
Carey Duncan- Morocco
duncan.carey@gmail.com



Kharbal James Kaltho- Nigeria
Kjkaltho@gmail.com



Dr Julian Raxworthy - South Africa
julian.raxworthy@uct.ac.za



Fatma Triki - Tunisia
fatmatr@yahoo.fr

IFLA central standing committee communications and external relations
The IFLA central CER role also had a succession from Bruno Marques who chaired the committee and did a fantastic work in the communication arena. Mónica Pallares from Mexico took the role as Chair of the committee. With her new standing committee communications and external relations action plan 2018-2019 now in place, the goals things are set to pave the way for active collaboration and involvement of all IFLA regions in the coming months leading to the celebration of IFLA's 70 years.



Mónica Pallares, Chair, IFLA-CER



Bruno Marques
Immediate Past Chair, IFLA-CER

NEWS FEEDS

<http://iflaonline.org/events/>



Further information can be found at <https://www.ifla2019.com/>



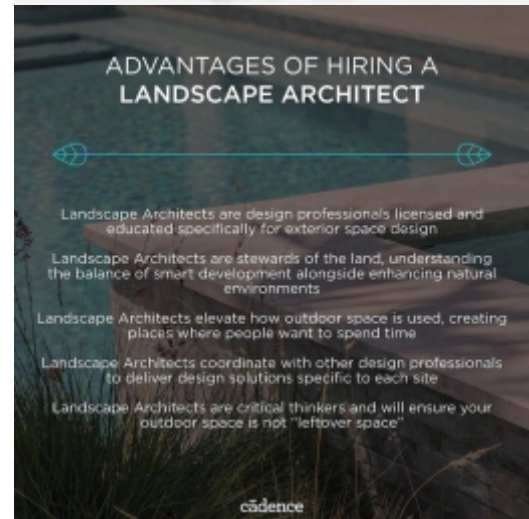
The Cultural Landscape Association is planning to organize a specialized workshop called "Taste of Persian Cultural Landscape", 17-23 November 2018, in Iran, in an international level for the experts, in order to get a better global recognition for Persian cultural landscape and the elite to know it further.

For more information and detailed plan please visit our website: www.classassociation.org

Kharbal James Kaltho,
Chair, IFLA-Africa CER

TALAE will organize in 2019 the 6th African Symposium
The Landscape, Landscape Architects and Sustainable cities

LANDSCAPE ARCHITECTS QUOTES



<http://toscanalandscape.com/landscape-design-quotes/>
landscaping-quotes-fascinating-on-landscape-design-quotes/



This inaugural event, celebrating and exploring the future of the exterior design, build and maintenance sectors. FutureScape Africa, powered by Pro Landscaper Africa, will be held at the Look out, Cape Town, V&A Waterfront on November 1st 2018. You can attend free seminars hosted by various industry influences from 9am-5pm and network with professionals in your field.

Visit our website to register your attendance. This is an opportunity for trade For more information see the pdf invite: <http://iflaonline.org/wp-content/uploads/2018/08/IFLA-invite-.pdf>
<http://www.futurescapeevent.co.za/>



MOOC on Landscape Ecology
Learn to understand and shape our future landscapes. Join inspiring participants from over 100 countries in the first Massive Open Online Course (MOOC) on Landscape Ecology. More at: <https://www.edx.org/course/landscape-ecology>